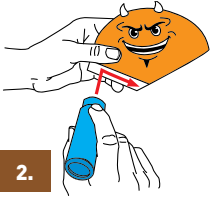


1.

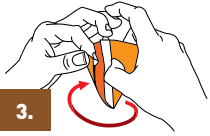


Cut out along the dotted line.



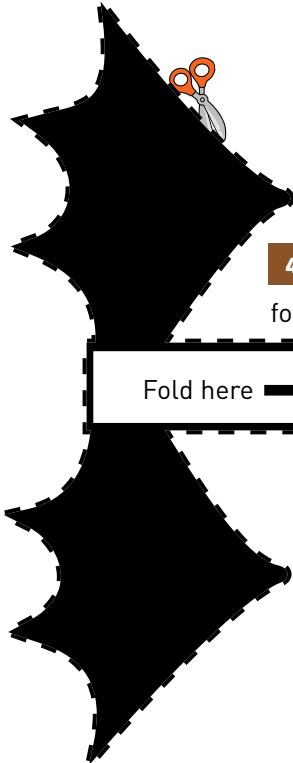
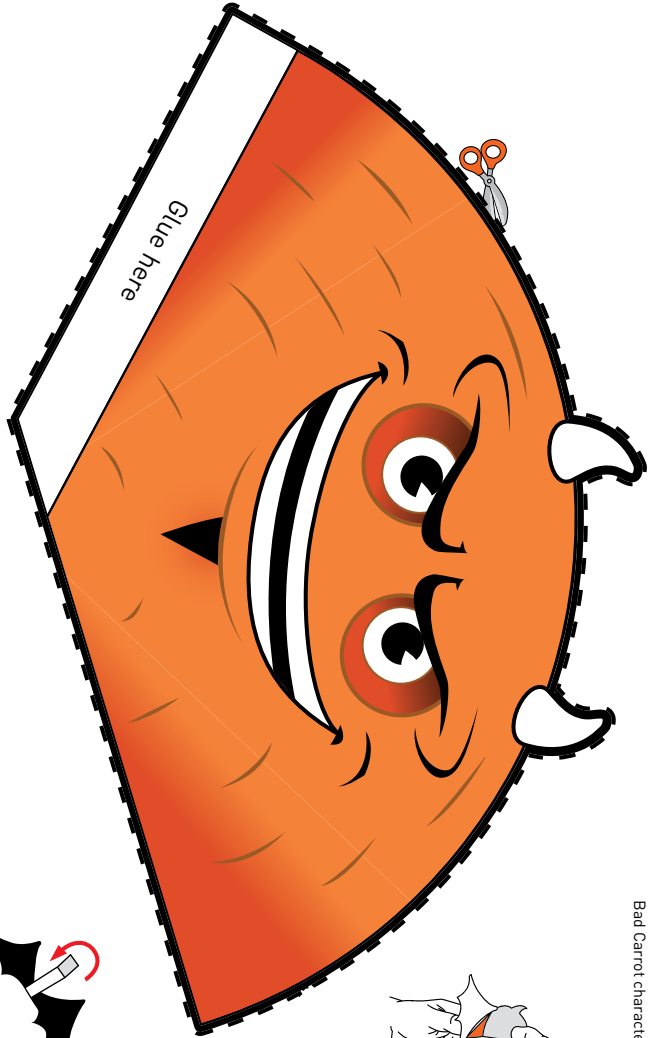
2.

Put glue on the white tab.



3.

Stick down the glued tab — make a cone shape so that the white tab goes under the opposite side. Hold firm until the glue sets.



4.

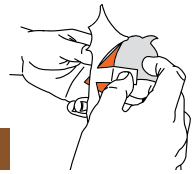
fold along the line.

Fold here



5.

Place the wings on the back and fold over inside.



6.

Secure the wings using a paperclip.

